

A photograph of a warehouse interior. In the foreground, a red and black Toyota forklift is carrying a metal wire cage. The cage is filled with large, grey, U-shaped plastic components, which are PP clamp saddles. A man in a black shirt is operating the forklift. In the background, there are several pallets stacked high with cardboard boxes. The warehouse has a high ceiling with exposed steel beams and fluorescent lighting. A large open bay door is visible in the background.

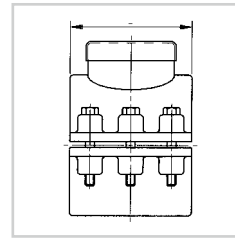
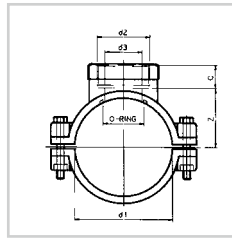
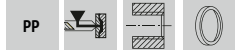
V-L Van de Lande

**PP CLAMP
SADDLES**

PP CLAMP SADDLES

PP CLAMP SADDLE

PP Aanboorzadels
PP Anschluss Schellen
PP Collier de prise
PP preas a staffa
Collarin de toma en PP



N = number of bolts, aantal bouten,

Schraubenmenge, nombre de boulons,
numero di bulloni, número de pernos

B = number of bolt holes, aantal boutgaten,

Bolzenlochmenge, nombre de trous de boulon,
numero di fori, número de taladros

ART.CODE	d1	d2	d3	L	Z	C	O-RING	N	B	QUANTITY
6.50.020	20	½" (F)	10	42	16	18	A	2 x R	2	100
6.50.025	25	½" (F)	12	50	19	18	B	2 x R	2	100
6.50.032	32	½" (F)	14	54	23	18	C	2 x S	2	100
6.50.033	32	¾" (F)	18	54	23	19	E	2 x S	2	100
6.50.034	32	1" (F)	23	54	23	22	E	2 x S	2	100
6.50.040	40	½" (F)	14	60	27	18	C	4 x S	4	80
6.50.041	40	¾" (F)	18	60	27	19	E	4 x S	4	80
6.50.042	40	1" (F)	23	60	27	22	G	4 x S	4	80
6.50.050	50	½" (F)	14	70	32	18	C	4 x S	4	60
6.50.051	50	¾" (F)	18	70	32	19	E	4 x S	4	60
6.50.052	50	1" (F)	23	70	32	22	G	4 x S	4	60
6.50.053	50	1¼" (F)	26	70	32	24	I	4 x S	4	60
6.50.063	63	½" (F)	14	80	39	18	F	4 x S	4	40
6.50.064	63	¾" (F)	18	80	39	19	H	4 x S	4	40
6.50.065	63	1" (F)	23	80	39	22	J	4 x S	4	40
6.50.066	63	1¼" (F)	26	80	39	24	K	4 x S	4	30
6.50.067	63	1½" (F)	33	80	39	24	K	4 x S	4	30
6.50.075	75	½" (F)	14	92	46	18	F	4 x T	6	25
6.50.076	75	¾" (F)	18	92	46	19	H	4 x T	6	25
6.50.077	75	1" (F)	23	92	46	22	J	4 x T	6	25
6.50.078	75	1¼" (F)	26	92	46	24	K	4 x T	6	25
6.50.079	75	1½" (F)	33	92	46	24	L	4 x T	6	25
6.50.080	75	2" (F)	42	92	46	28	L	4 x T	6	25
6.50.090	90	½" (F)	14	98	53	18	F	4 x T	6	25
6.50.091	90	¾" (F)	18	98	53	19	H	4 x T	6	25
6.50.092	90	1" (F)	23	98	53	22	J	4 x T	6	25
6.50.093	90	1¼" (F)	26	98	53	24	K	4 x T	6	25
6.50.094	90	1½" (F)	33	98	53	24	L	4 x T	6	25
6.50.095	90	2" (F)	42	98	53	28	M	4 x T	6	25
6.50.110	110	1" (F)	23	114	64	22	J	4 x T	6	20
6.50.111	110	1¼" (F)	26	114	64	24	K	4 x T	6	20
6.50.112	110	1½" (F)	33	114	64	24	L	4 x T	6	20
6.50.113	110	2" (F)	42	114	64	28	M	4 x T	6	20
6.50.114	110	2½" (F)	60	114	64	33	O	4 x T	6	20
6.50.125	125	1" (F)	23	120	71	22	J	4 x T	6	15

PP CLAMP SADDLE

PP Aanboorzadels
PP Anschluss Schellen
PP Collier de prise
PP preas a staffa
Collarin de toma en PP

ART.CODE	d1	d2	d3	L	Z	C	O-RING	N	B	QUANTITY
6.50.126	125	1¼" (F)	26	120	71	24	K	4 x T	6	15
6.50.127	125	1½" (F)	33	120	71	24	L	4 x T	6	15
6.50.128	125	2" (F)	42	120	71	28	M	4 x T	6	15
6.50.129	125	2½" (F)	60	120	71	33	O	4 x T	6	15
6.50.140	140	1¼" (F)	26	130	80	24	K	6 x T	6	10
6.50.141	140	2" (F)	42	130	80	28	M	6 x T	6	10
6.50.142	140	2½" (F)	60	130	80	33	O	6 x T	6	10
6.50.160	160	1" (F)	23	144	90	33	J	6 x T	6	10
6.50.161	160	1¼" (F)	26	144	90	24	K	6 x T	6	10
6.50.162	160	1½" (F)	33	144	90	24	L	6 x T	6	10
6.50.163	160	2" (F)	42	144	90	28	M	6 x T	6	10
6.50.164	160	2½" (F)	60	144	94	33	O	6 x T	6	10
6.50.165	160	3" (F)	76	144	94	36	Q	6 x T	6	10

Also available with INOX bolt + nut (6.51.---).

Ook leverbaar met RVS bout + moer (6.51.---).

Auch lieferbar mit Edelstahl Bolz + Mutter (6.51.---).

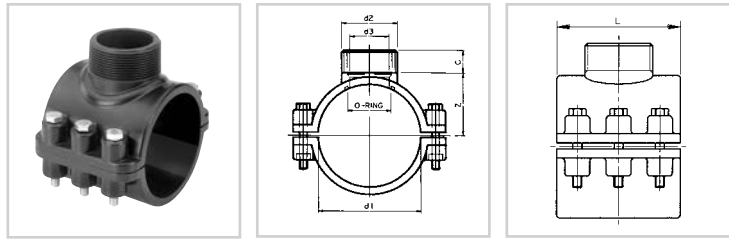
Aussi Livrable avec boulon + écrou inoxydable (6.51.---).

Disponibile anche con bullone + dado INOX (6.51.---).

También disponible con tornillo + tuerca en INOX (6.51.---).

PP CLAMP SADDLE

PP Aanboorzadels
PP Anschluss Schellen
PP Collier de prise
PP preas a staffa
Collarin de toma en PP



N = number of bolts, aantal bouten,
Schraubenmenge, nombre de boulons,
numero di bulloni, número de pernos

B = number of bolt holes, aantal boutgaten,
Bolzenlochmenge, nombre de trous de boulon,
numero di fori, número de taladros

ART.CODE	d1	d2	d3	L	Z	C	O-RING	N	B	QUANTITY
6.55.020	20	½" (M)	10	42	27	15	A	2 x R	2	100
6.55.025	25	½" (M)	12	50	27	15	B	2 x R	2	100
6.55.032	32	½" (M)	12	54	29	15	C	2 x S	2	100
6.55.033	32	¾" (M)	17	54	29	16	E	2 x S	2	100
6.55.034	32	1" (M)	18	54	29	19	E	2 x S	2	100
6.55.040	40	½" (M)	12	60	32	15	C	4 x S	4	80
6.55.041	40	¾" (M)	17	60	32	16	E	4 x S	4	80
6.55.042	40	1" (M)	23	60	32	19	G	4 x S	4	80
6.55.050	50	½" (M)	12	70	38	15	C	4 x S	4	60
6.55.051	50	¾" (M)	17	70	38	16	E	4 x S	4	60
6.55.052	50	1" (M)	23	70	38	19	G	4 x S	4	60
6.55.053	50	1¼" (M)	26	70	38	21	I	4 x S	4	60
6.55.063	63	½" (M)	12	80	44	15	D	4 x S	4	40
6.55.064	63	¾" (M)	17	80	44	16	F	4 x S	4	40
6.55.065	63	1" (M)	23	80	44	19	H	4 x S	4	40
6.55.066	63	1¼" (M)	26	80	44	21	J	4 x S	4	30
6.55.067	63	1½" (M)	33	80	44	21	K	4 x S	4	30
6.55.075	75	½" (M)	12	92	51	15	D	4 x T	6	25
6.55.076	75	¾" (M)	17	92	51	16	F	4 x T	6	25
6.55.077	75	1" (M)	23	92	51	19	H	4 x T	6	25
6.55.078	75	1¼" (M)	26	92	51	21	J	4 x T	6	25
6.55.079	75	1½" (M)	33	92	51	21	K	4 x T	6	25
6.55.080	75	2" (M)	42	92	51	26	L	4 x T	6	25
6.55.090	90	½" (M)	12	98	58	15	D	4 x T	6	25
6.55.091	90	¾" (M)	17	98	58	16	F	4 x T	6	25
6.55.092	90	1" (M)	23	98	58	19	H	4 x T	6	25
6.55.093	90	1¼" (M)	26	98	58	21	J	4 x T	6	25
6.55.094	90	1½" (M)	33	98	58	21	K	4 x T	6	25
6.55.095	90	2" (M)	42	98	58	26	L	4 x T	6	25
6.55.110	110	1" (M)	23	114	68	19	H	4 x T	6	20
6.55.111	110	1¼" (M)	26	114	68	21	J	4 x T	6	20
6.55.112	110	1½" (M)	33	114	68	21	K	4 x T	6	20
6.55.113	110	2" (M)	42	114	68	26	L	4 x T	6	20
6.55.114	110	2½" (M)	58	114	68	31	N	4 x T	6	20
6.55.125	125	1" (M)	23	120	75	19	H	4 x T	6	15

PP CLAMP SADDLE

PP Aanboorzadels
PP Anschluss Schellen
PP Collier de prise
PP preas a staffa
Collarin de toma en PP

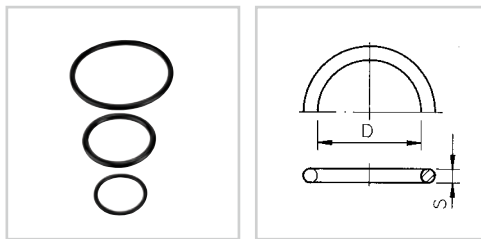
ART.CODE	d1	d2	d3	L	Z	C	O-RING	N	B	QUANTITY
6.55.126	125	1¼" (M)	26	120	75	21	J	4 x T	6	15
6.55.127	125	1½" (M)	33	120	75	21	K	4 x T	6	15
6.55.128	125	2" (M)	42	120	75	26	L	4 x T	6	15
6.55.129	125	2½" (M)	58	120	75	31	N	4 x T	6	15
6.55.140	140	1¼" (M)	26	130	84	21	J	6 x T	6	10
6.55.141	140	2" (M)	42	130	84	26	L	6 x T	6	10
6.55.142	140	2½" (M)	58	130	84	31	N	6 x T	6	10
6.55.160	160	1" (M)	23	144	93	19	H	6 x T	6	10
6.55.161	160	1¼" (M)	26	144	93	21	J	6 x T	6	10
6.55.162	160	1½" (M)	33	144	93	21	K	6 x T	6	10
6.55.163	160	2" (M)	42	144	93	26	L	6 x T	6	10
6.55.164	160	2½" (M)	58	144	93	31	N	6 x T	6	10
6.55.165	160	3" (M)	72	144	93	34	P	6 x T	6	10

PP CLAMP SADDLES

O-RING (PARTS)

O-ring
O-ring
Joint torique
O-ring
Junta torica

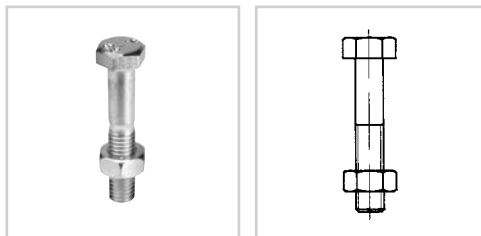
EPDM



ART.CODE		D	S	QUANTITY
8.06.013	O-ring A	13.00	3.00	100
8.06.014	O-ring B	16.00	3.00	100
8.06.015	O-ring C	17.04	3.53	100
8.06.017	O-ring D	16.82	5.33	100
8.06.018	O-ring E	21.82	3.53	100
8.06.022	O-ring F	21.59	5.33	100
8.06.023	O-ring G	27.80	3.60	100
8.06.024	O-ring H	27.94	5.33	100
8.06.030	O-ring I	30.80	3.60	100
8.06.031	O-ring J	31.12	5.33	100
8.06.040	O-ring K	40.64	5.33	100
8.06.055	O-ring L	50.17	5.33	100
8.06.063	O-ring M	59.69	5.33	100
8.06.067	O-ring N	66.04	5.33	100
8.06.073	O-ring O	75.57	5.33	50
8.06.077	O-ring P	81.92	5.33	50
8.06.080	O-ring Q	91.44	5.33	50

BOLT + NUT (PARTS)

Bout + moer
Bolz + Mutter
Boulon + écrou
Bullone + dado
Tornillo + tuerca



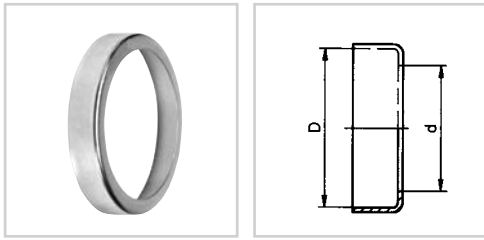
Galvanized

ART.CODE					QUANTITY
9.90.035	bolt R	M8x35 + nut	clamp saddles	20-25	20
9.90.045	bolt S	M8x45 + nut	clamp saddles	32-63	20
9.90.060	bolt T	M8x60 + nut	clamp saddles	75-160	20

INOX

ART.CODE					QUANTITY
9.90.036	bolt R	M8x35 + nut	clamp saddles	20-25	20
9.90.046	bolt S	M8x45 + nut	clamp saddles	32-63	20
9.90.061	bolt T	M8x60 + nut	clamp saddles	75-160	20

PP CLAMP SADDLES



INOX REINFOR- CEMENTRING (PARTS)

RVS versterkingsring
Edelstahlen Verstärkungsring
Bague de renforcement inoxydable
Anello di rinforzo INOX
Anillo de refuerzo en INOX

ART.CODE	d	B	QUANTITY
8.12.021	½"	31.20	50
8.12.026	¾"	38.20	50
8.12.033	1"	45.20	50
8.12.041	1¼"	55.20	50
8.12.050	1½"	61.80	50
8.12.063	2"	76.85	50
8.12.075	2½"	91.80	50
8.12.090	3"	109.75	50

INOX

Fits all female threaded PP clamp saddles from ½" up to 3".

Passend op alle PP aanboorzadels met binnendraad van ½" t/m 3".

Passt auf alle PP anschlussschellen mit Innengewinde von ½" bis 3".

Assorti aux collier de prise PP avec filetage femelle de ½" jusqu'à 3".

Si adatta a presa a staffa la filetta tura femmina in PP de ½" fino a 3".

Combina bien con collarin de toma en PP con rosca hembra de ½" a 3".